

Secure Treatment Centers



Adelphoi 
Village

www.adelphoi.org

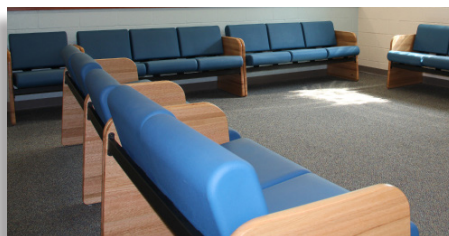
What are Secure Treatment Centers?

Secure Treatment Centers are facilities for adjudicated youth who have committed serious offenses, are aggressive, runaway risks, have committed sex offenses, or display other serious delinquent behaviors. The youth housed in the Secure Treatment Centers usually have had prior court contacts and may have several prior placements. The female and male secure units service up to 15 youth, ages 12 to 18.



Admission/ Intake

- Placing agency must provide a copy of all pertinent records and a court order
- All youth are interviewed prior to acceptance so as to determine appropriateness of placement
- IQ over 70
- Ability to participate in treatment



Benefits

- Balanced and Restorative Justice (BARJ) principles are incorporated into programs emphasizing community service projects, restitution payments, competency development, and victim restoration
- Adjoining recreation center gives youth access to both indoor and outdoor physical activity
- We offer outpatient substance abuse counseling
- Spirituality group is offered
- Locked secure supervision is provided to monitor youth 24 hours a day, 7 days a week
- Secure transportation is provided
- Financial assistance is offered to parents in need for travel and visitation

Education

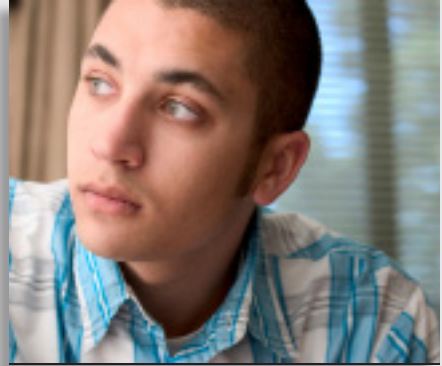
Educational programming for youth in each group home will be determined pursuant to Section 1306 of the Public School Code (24 P.S. §13-1306) which states that . . . children who are residents of such homes, but not legal residents in such district (shall be permitted) to attend the public schools in said district. An educational team will include membership from the host school district, Dr. Robert Ketterer Charter School or Adelphoi Education, parents or guardians, and teachers from the host school district and the charter school.

Educational programming for Manor is provided by the Central Cambria School District

Program Specifics

Adelphoi embraces a model of trauma-informed care that helps create therapeutic communities that provide safety for both youth and the staff who work with them. Treatment interventions include:

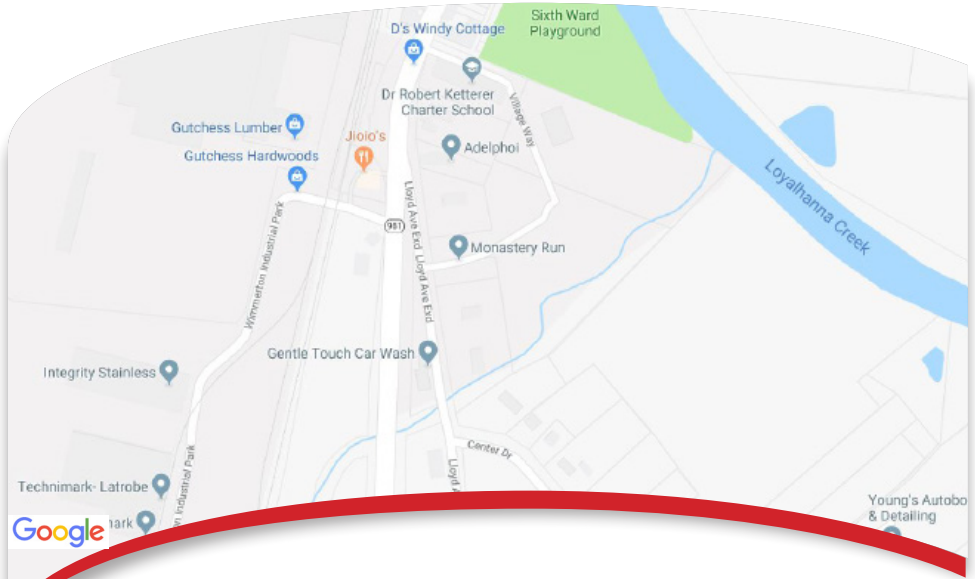
- Reality Therapy/Choice Theory, Contingency Contracting, Choice Theory Group, Behavior Modification, and Specialized Counseling Services
- Victim Awareness Curriculum
- Counseling focusing on PTSD and victim counseling, including the 12 week group curriculum (RTC) Residential Treatment Curriculum
- Psychiatric and psychological testing evaluation services
- ART (Aggression Replacement Training)



Discharge/Aftercare Planning

- Step-down placement into an intensive supervision, community-based group home facility (including specialized programs for drug abuse and/or sexual offending) is available in the Adelphoi system
- Placement into specialized independent living, foster care or multisystemic therapy program is available, if deemed appropriate
- Counselors are available to provide a range of services to youth who will be returning home from secure care. Services include:
 - A home study of the family
 - Family counseling sessions
 - Parent visitation
 - An extensive aftercare program





About Adelphoi

Adelphoi is a non-profit organization dedicated to providing a continuum of quality services to children, youth, and families. Headquartered in Latrobe, PA, Adelphoi has programs in 30 counties, serving nearly 1,000 youth and families on a daily basis and over 2,500 children annually. Adelphoi's vast continuum of care includes group homes, a Charter School, foster and adoption services, education programs, mental health services, after-school programs, in-home services, shelter care, multisystemic therapy, and secure care.

Adelphoi has over 700 employees and assists persons and communities in need from over 60 counties throughout the Commonwealth, as well as from Ohio and Delaware. Adelphoi's mission: Offering outcome-based solutions for abused, neglected, delinquent and other at-risk children and their families through a continuum of treatment and education services that provide a foundation of hope for the future.

For more information, please contact:

Candice Rinaldi
Director of Admissions
Office: 724-804-7000
E-mail: admissions@adelphoi.org